

LoryGateConfig

User Manual



Revision History

Revision Date	Document Ver.	Pages	Description
Sep. 30. 2021	1.0	All	New



Contents

Ch.1	Overview	3
-	Software	3
-	Operating Environment	3
-	Features	3
-	Technical Support	4
CH.2	How to Use	5
-	Search	5
-	Search IP	5
-	Configure Overview	6
-	Configure - Network	6
-	Configure - Operation Mode	7
-	Configure - LoRa Option	7
-	Import	8
-	Telnet	8
-	Web	8
-	Upgrade Firmware	8
-	Apply	9

CH.1 Overview

LoryGateConfig is a program for setting up the operating environment. It is a utility that helps you easily search and set up devices using UDP.

Software

It is a Windows application and runs on Windows with the following execution file:

LoryGateConfig_v1.0.exe (1.0 is a version name)

Operating Environment

- CPU recommendation : Pentium 1 Ghz or higher
- Memory : 512Mb or higher
- OS : XP/2003/Vista/7/8/10
- Network : 10M Ethernet or higher

Features

- Search: Search the device on the local Network.
- Search IP: Search the equipment if not detected by Search or not on the local Network
- Configuration: Setup the searched equipment or save the setting information of the equipment to the PC.
- Import: Imports the setting information and applies to current equipment.
- Telnet: Access to the selected device through Telnet.
- Web: Access to the selected device through the web.
- Upgrade Firmware: Upgrade the firmware of the selected device.
- Apply: Device Name, IP Address, Subnet Mask, Gateway, and LoryGateView IP of devices displayed on the list can be modified directly from the list. If the content is changed, it can be saved and applied with [Apply].

Technical Support

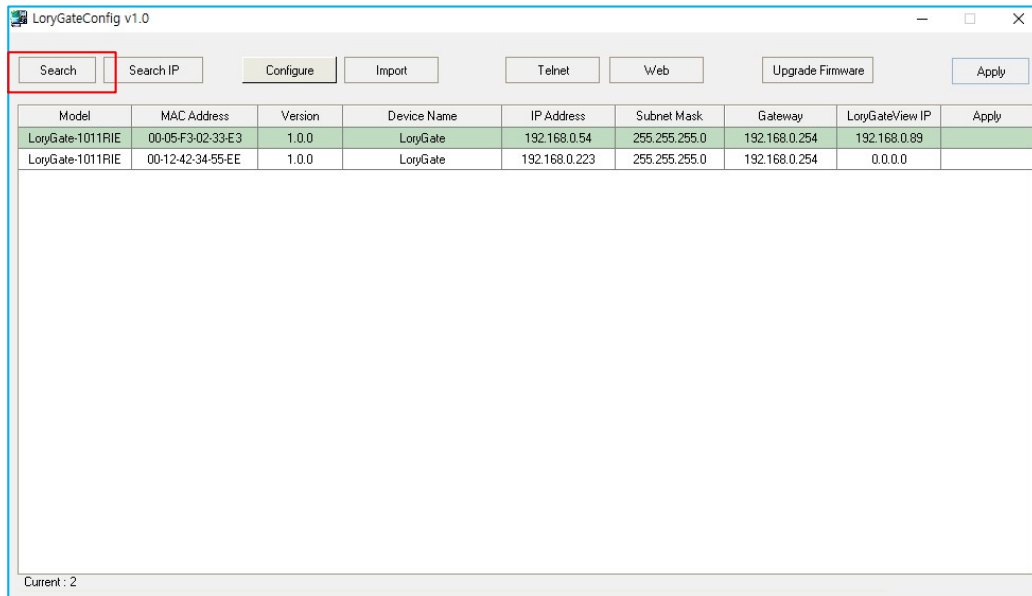
SystemBase provides technical support to customers in three ways.

1. If you visit technical support on our website <http://www.sysbas.com/>, you can receive technical support through frequently asked questions(FAQs) or boards.
2. If you send an email to the technical supported team(tech@sysbas.com), you can receive an answer in a short time.
3. If you want faster technical support, you can get customer support over the phone. The phone number is +82-2-855-0501.

CH2. How to Use

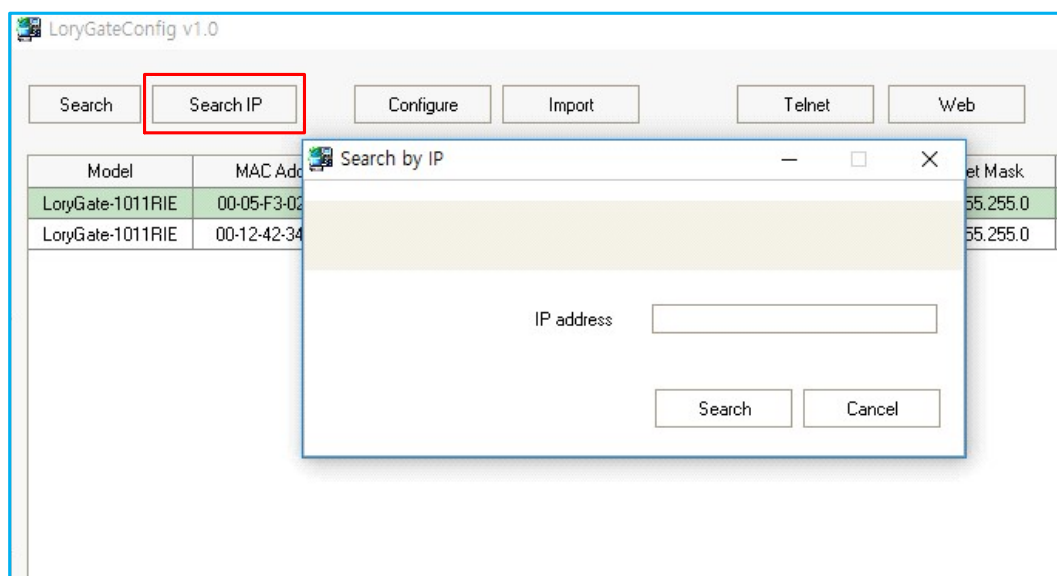
Search

Shows the LoryGate existing on the Local Area Network.



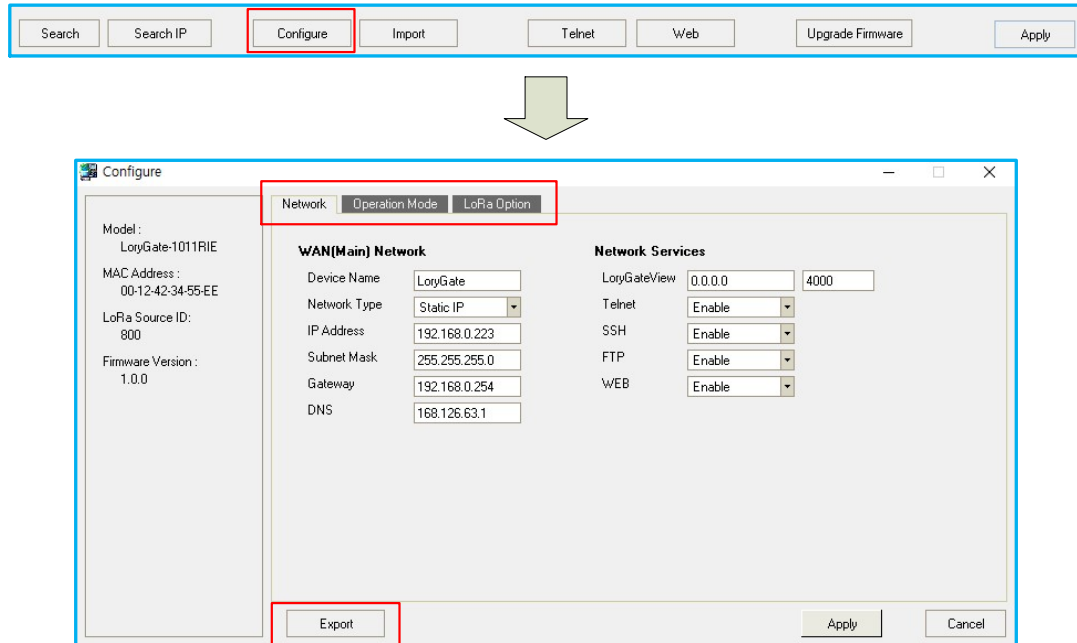
Search IP

If it cannot be found by search or is not on a Local Network, it can be searched directly with an IP address.



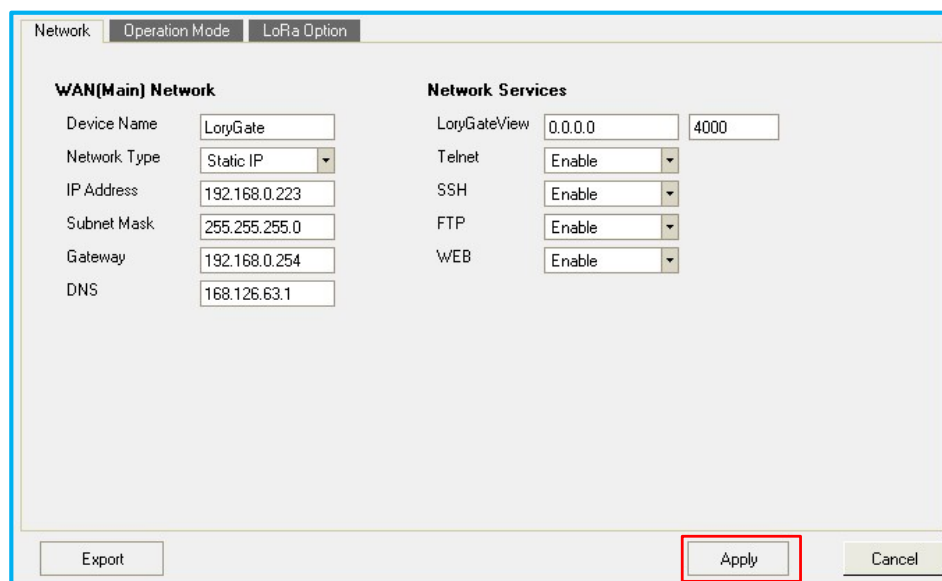
Configure Overview

When you click the [Configure] button, the Configure window appears so you can change and save the settings of the selected device. Network, Operation Mode, LoRa Option, etc. can be set as below, and the current device setting can be saved as a file through the [Export] button.



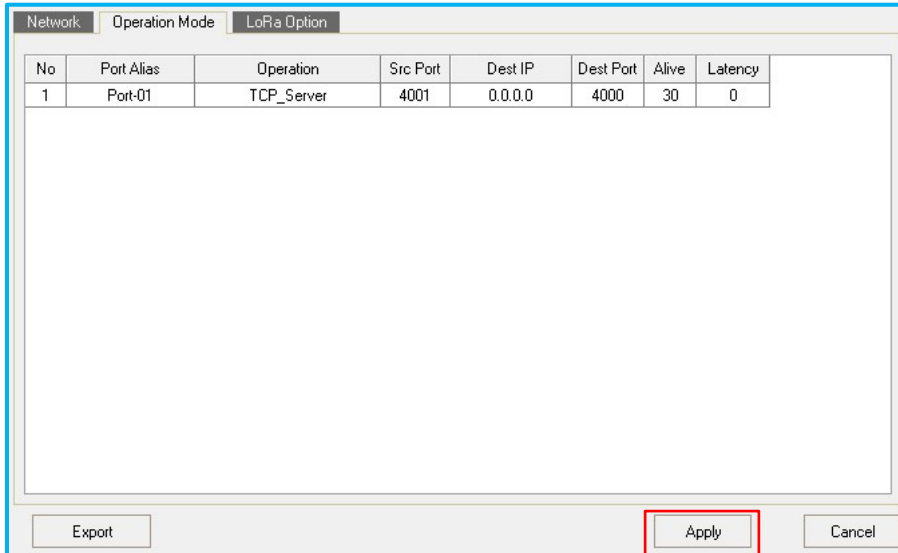
Configure - Network

If you select the [Network] tab in the Configure window, you can modify the following items. When you modify and press the [Apply] button, the set value is applied to LoryGate, and when you press the [Cancel] button, the changed value is not applied and the Configuration window is terminated. Please refer to the LoryGate manual for details of each item.



Configure - Operation Mode

If you select the [Operation Mode] tab in the Configure window, you can modify the following items. When you modify and press the [Apply] button, the set value is applied to LoryGate, and when you press the [Cancel] button, the changed value is not applied and the Configuration window is terminated. Please refer to the LoryGate manual for details of each item.

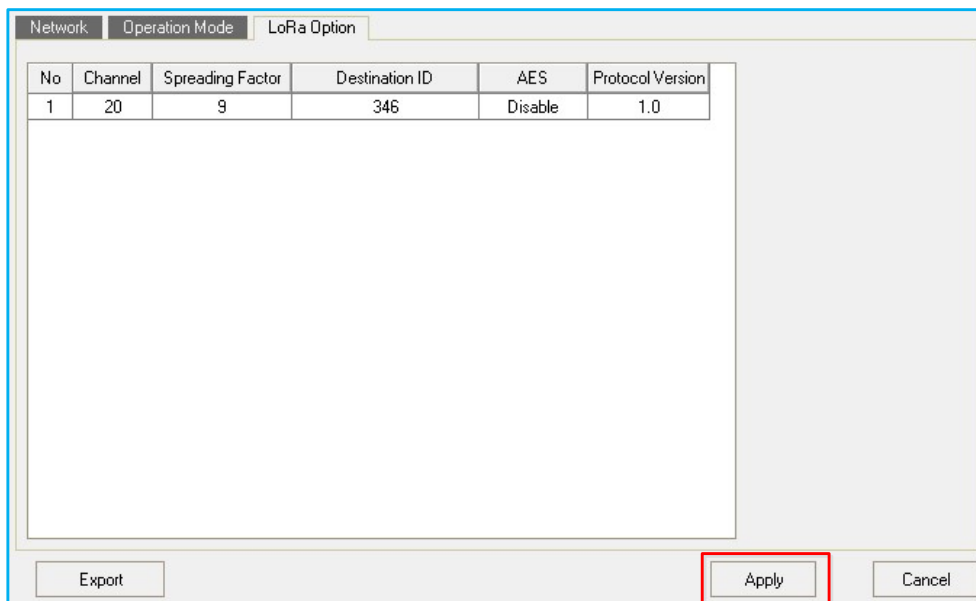


No	Port Alias	Operation	Src Port	Dest IP	Dest Port	Alive	Latency
1	Port-01	TCP_Server	4001	0.0.0.0	4000	30	0

Export Apply Cancel

Configure - LoRa Option

If you select the [LoRa Option] tab in the Configure window, you can modify the following items. When you modify and press the [Apply] button, the set value is applied to LoryGate, and when you press the [Cancel] button, the changed value is not applied and the Configuration window is terminated. Please refer to the LoryGate manual for details of each item.

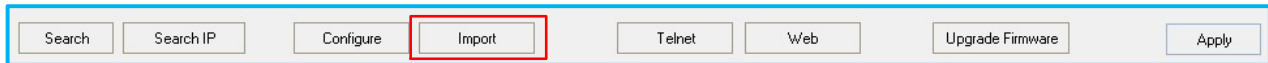


No	Channel	Spreading Factor	Destination ID	AES	Protocol Version
1	20	9	346	Disable	1.0

Export Apply Cancel

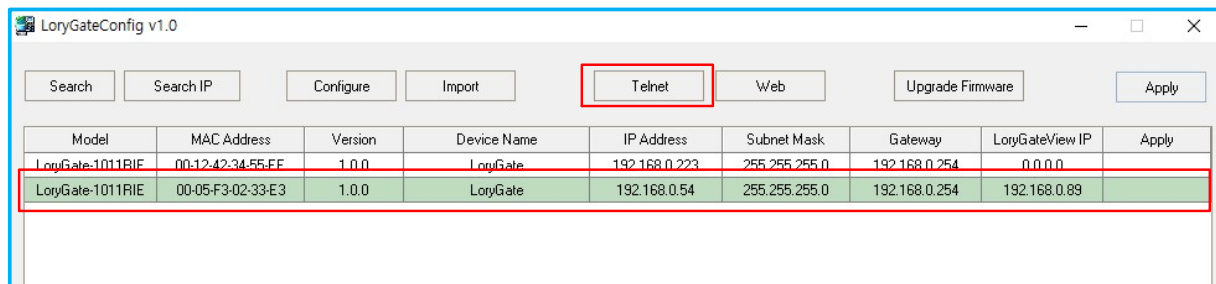
Import

The previous setting value stored in the Configure - Export menu is retrieved and applied to the current equipment. Press the [Apply] button to apply to the equipment.



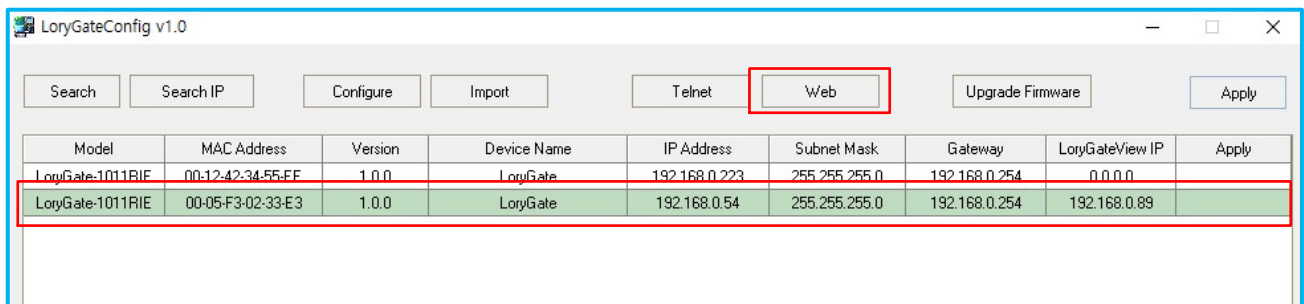
Telnet

Access Telnet with the IP of the device selected in the list. If Telnet server of the LoryGate is disabled or default port of the Telnet is changed, it will not be connected.



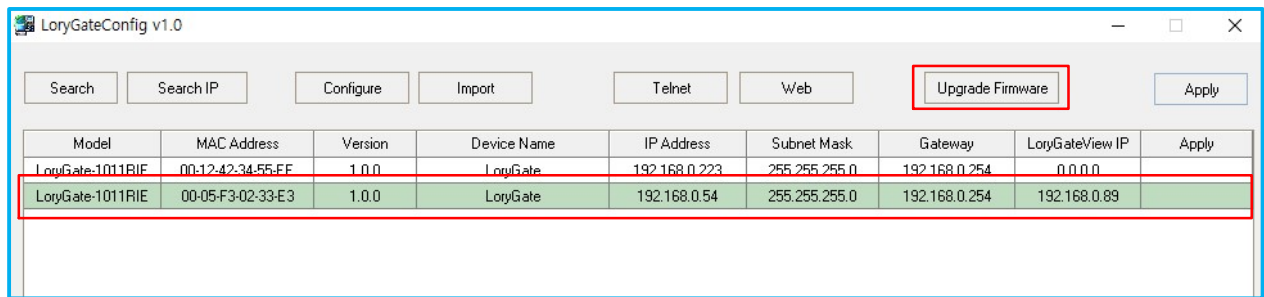
Web

Access the web server through a web browser with the IP of the device selected in the list. If the web server of LoryGate is disabled or the default port of the web server is changed, it will not be connected.



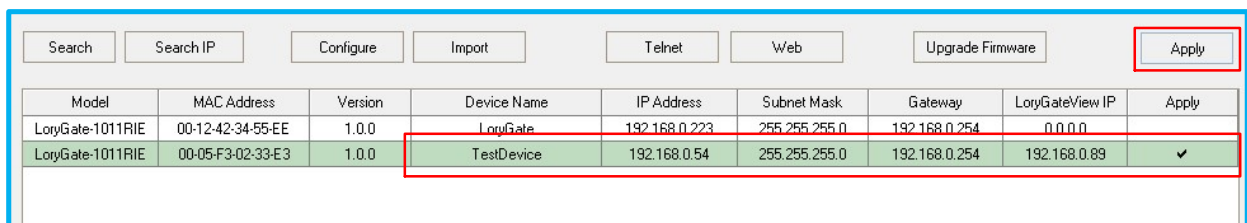
Upgrade Firmware

Update the firmware for the device selected in the list. When functions are added or firmware files are modified, they will be posted on the SystemBase website <http://www.sysbas.com/>.



Apply

From the searched Device List, you can set up Device Name, IP, Subnet Mask, Gateway, and LoryGateView IP. If you press [Apply] button after the change, it is applied to each of the changed devices. However, if the network information changes, it may not operate normally, so Refresh should be performed through the [Search] button.





If you have any inconvenience while using the product, please contact us.

Email:

- Purchase/Quotation: overseas@sysbas.com
- Technical Support/RMA: tech@sysbas.com

www.sysbas.com

Tel: +82-2-855-0501

Fax: +82-2-855-0580

Working Hour

MON ~ FRI 9:00 ~ 18:00

Copyright © 2020 SystemBase Co., Ltd. All Right Reserved.