

LoryGateView

User Manual



Revision History

Revision Date	Document Ver.	Pages	Description
Sep. 30. 2021	1.0	All	Initial release

Contents

CH.1	Overview	3
-	Software	3
-	Operating Environment	3
-	Features	3
-	Technical Support	4
CH.2	How to Use	5
-	Auto-Connect	5
-	LoryGateConfig	6
-	Configuration	6
-	Help	7
-	About	7
-	Statistics	8
-	Statistics - Clear all	8
-	Statistics - Clear port	9
-	Statistics - Reset	9
-	Statistics - Scope	10
-	TxRxViewForm - Hex, String Radiobutton	10
-	TxRxViewForm - Save	11

CH1. Overview

LoryGateView is a Windows application that provides real-time monitoring of LoryGate products from a remote location supplied and sold by SystemBase Co., Ltd.

Software

It is a Windows application and runs on Windows with the following execution file:

LoryGateView.exe

Operating Environment

- CPU recommendation : Pentium 1Ghz or higher
- Memory : 512Mb or higher
- OS : Windows 7/8/10
- Network : 10M Ethernet or higher

Features

- Auto-Connect: When the IP address and port number of LoryGateView corresponding to LoryGate equipment are specified, it is automatically listed in LoryGateView.
- LoryGateConfig: Runs LoryGateConfig.
- Configuration: Runs the setting window of LoryGateView.
- Help: Runs the LoryGateView manual.
- About: Outputs the version information of LoryGateView.
- Statistics: When double-click the connected equipment list, the detail information of the corresponding LoryGate are output.
- Clear all: Initializes TX, RX values of all ports.
- Clear port: Initializes TX, RX values of the selected port.

- Reset: Initializes the selected port.
- Scope: Outputs a TxRxViewForm that checks the TX and RX data of the selected port.
- Hex, String: Outputs TX, RX Data in the selected type.
- TX, RX Save: Save the contents of TX or RX as a txt file.

Technical Support

SystemBase provides technical support to customers in three ways.

1. If you visit technical support on our website <http://www.sysbas.com/>, you can receive technical support through frequently asked questions(FAQs) or boards.
2. If you send an email to the technical supported team(tech@sysbas.com), you can receive an answer in a short time.
3. If you want faster technical support, you can get customer support over the phone. The phone number is +82-2-855-0501.

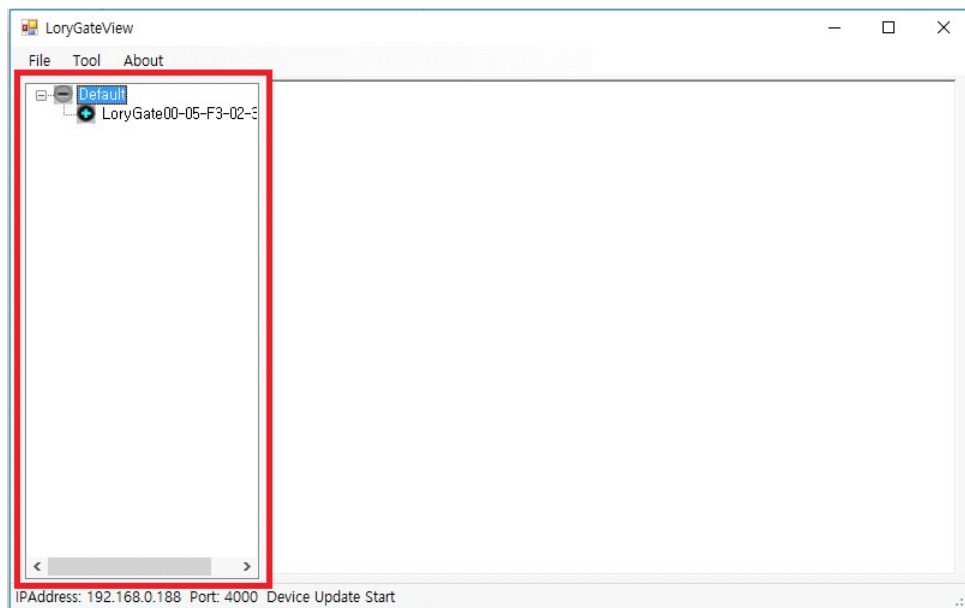
CH2. How to Use

Auto-Connect

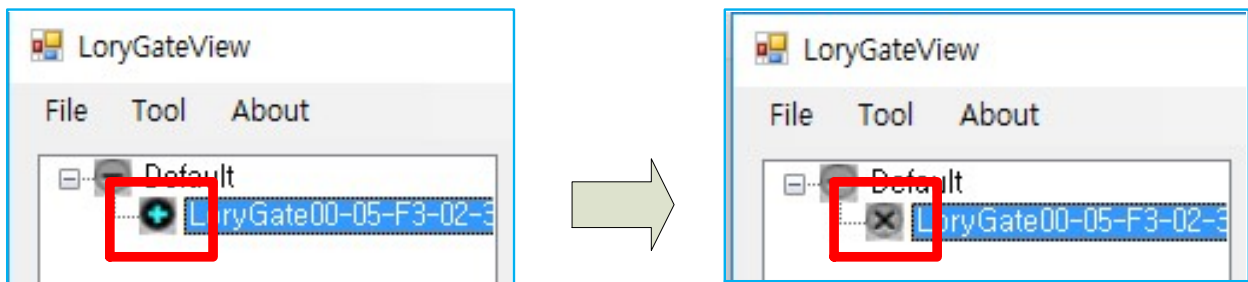
If the LoryGate existing on the network specifies the IP address and port number of the corresponding LoryGateView, it is automatically listed in LoryGateView.

The name and MAC-Address information of the listed equipment are displayed.

Double-click on the equipment to output a detailed information window.



The connection state of the corresponding equipment is displayed as an icon image, and the image is updated in real time according to the connection state.

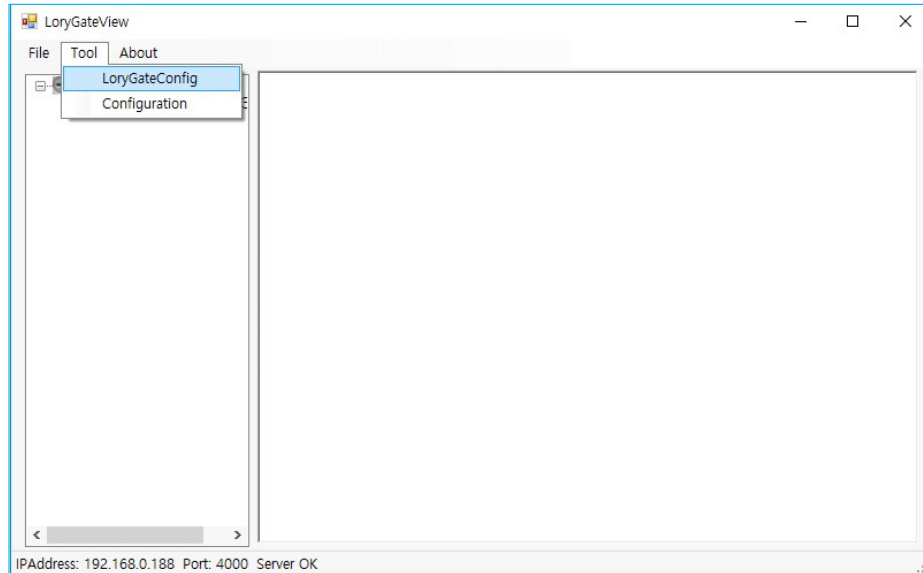


LoryGateConfig

Tool - LoryGateConfig menu.

Click the menu to run LoryGateConfig utility.

Please refer to the LoryGateConfig manual for LoryGateConfig features.

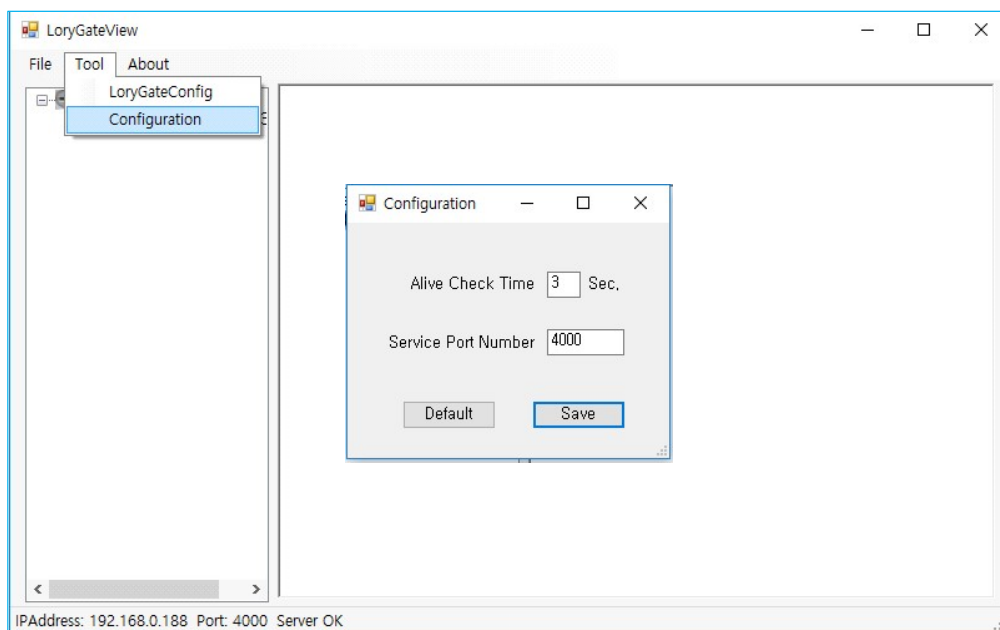


Configuration

Tool - LoryGateConfig menu.

The Configuration window is displayed.

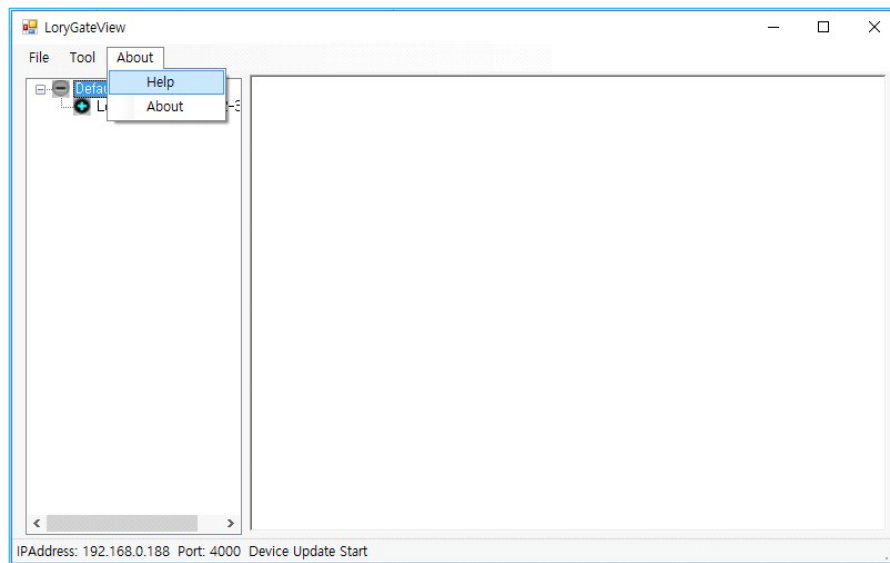
You can set the Alive message transmission cycle with the equipment and set the port number of LoryGateView. Press the [Save] button to change the LoryGateView setting with changed information.



Help

About - Help menu.

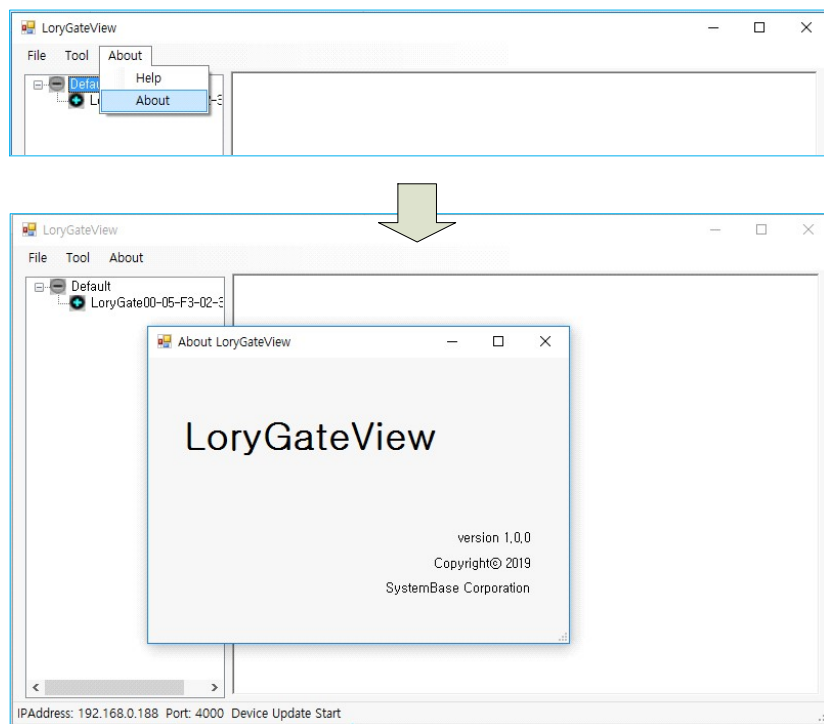
LoryGateView manual will be displayed.



About

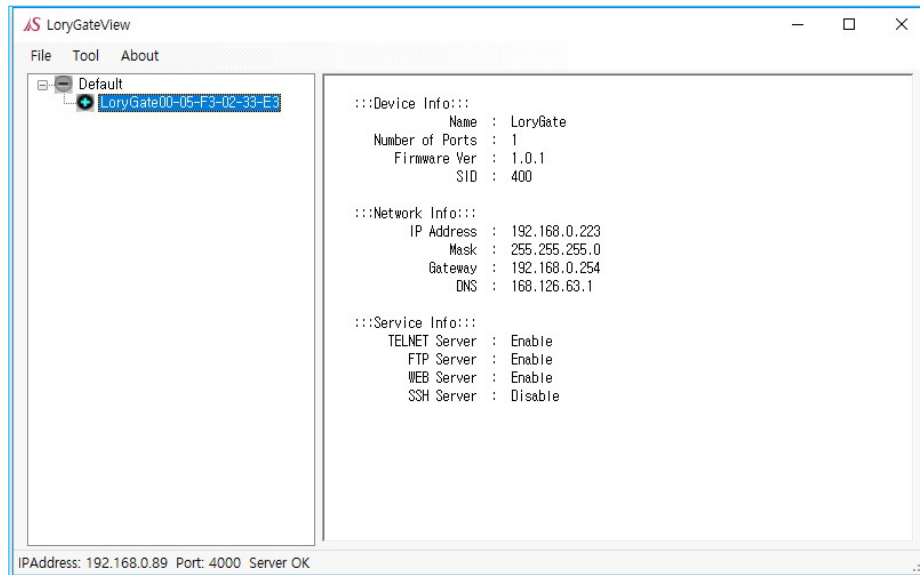
About - About menu.

Version information of running LoryGateView will be displayed.



Information

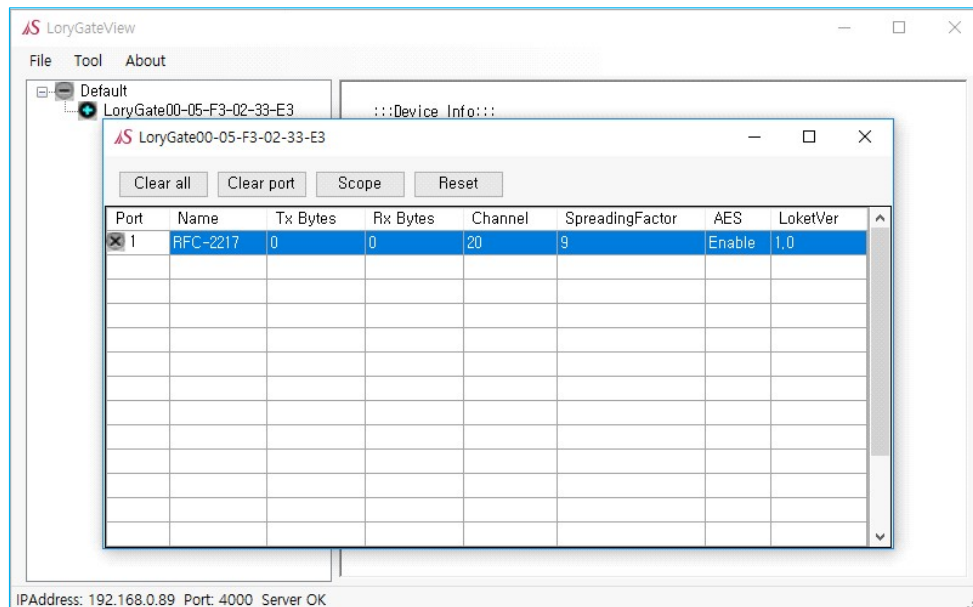
When double-click on one of the connected equipment lists, basic information on the selected equipment is displayed as follows.



Statistics

When one of the connected equipment lists is double-clicked, a window in which detailed information of the selected equipment is output is generated and displayed.

A list of ports supported by the equipment and details of each port are displayed.



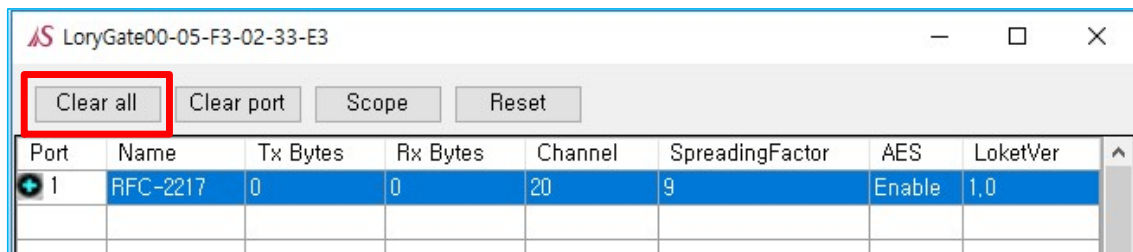
- Port: Indicates the number and connection status of the LoRa port.



- Name: Shows the operation mode of the LoRa port.
- Tx Bytes: Shows Byte of data transmitted to the LoRa Port.
- Rx Bytes: Shows Byte of data received from the LoRa Port.
- Channel: shows the set LoRa channel.
- Spreading Factor: Shows the set value of the spreading factor of the set LoRa.
- AES: Shows the AES encryption settings used by LoRa.
- LoKetVer: Shows the protocol version used by LoRa.

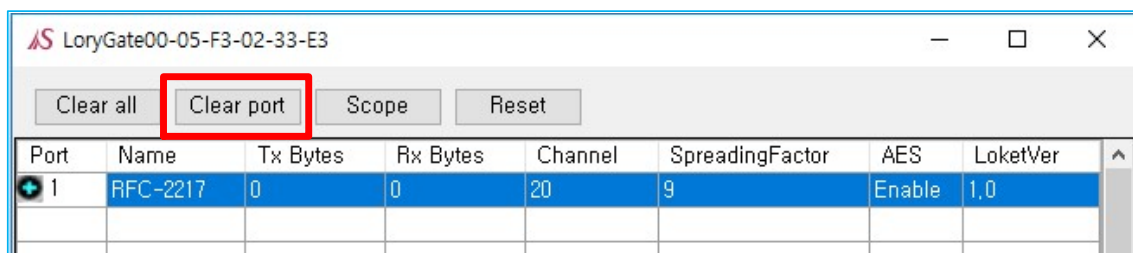
Statistics - Clear all

The amount of TX and RX data transmission of all ports existing in the equipment is cleared to 0.



Statistics - Clear port

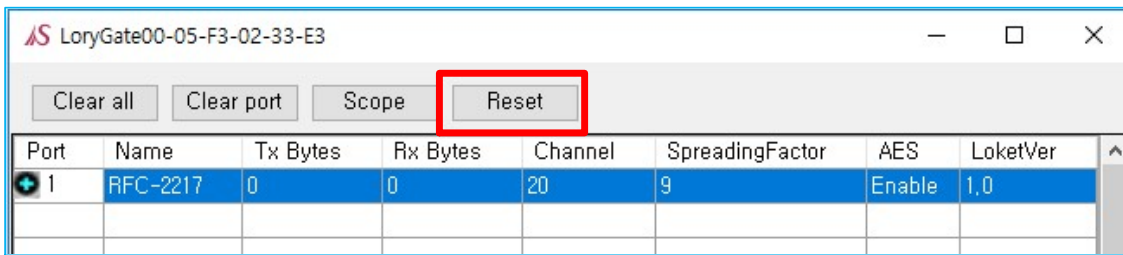
The amount of TX and RX data transmission of the selected port among the ports of LoryGate is cleared to 0.



Statistics - Reset

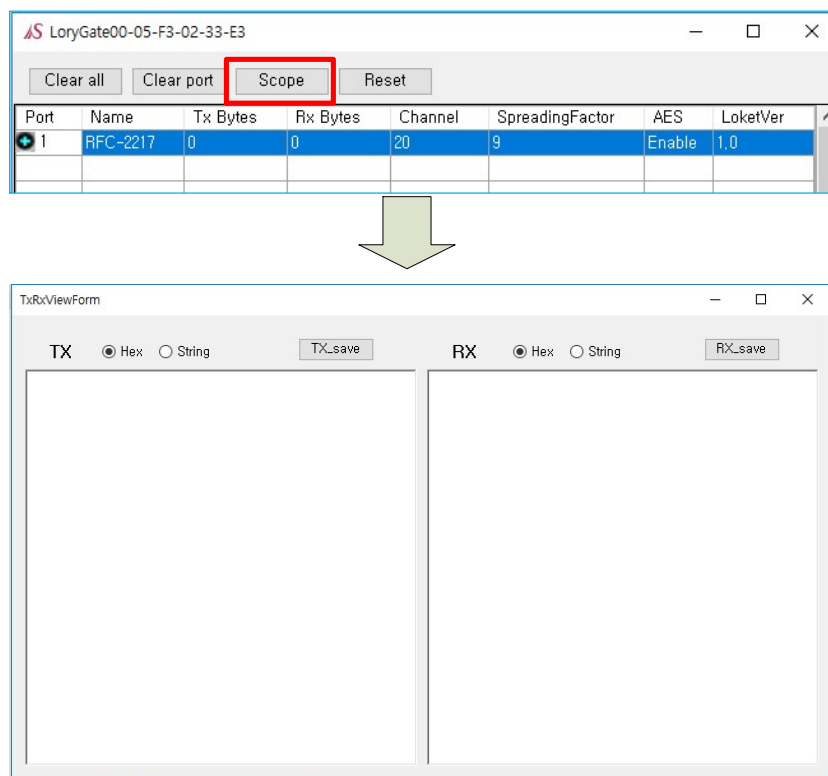
Delivers the command to Reset the selected port to LoryGate.

The LoryGate that received the command restarts the socket of the corresponding port. This is not applied to RFC-2217 operating as a separate protocol.



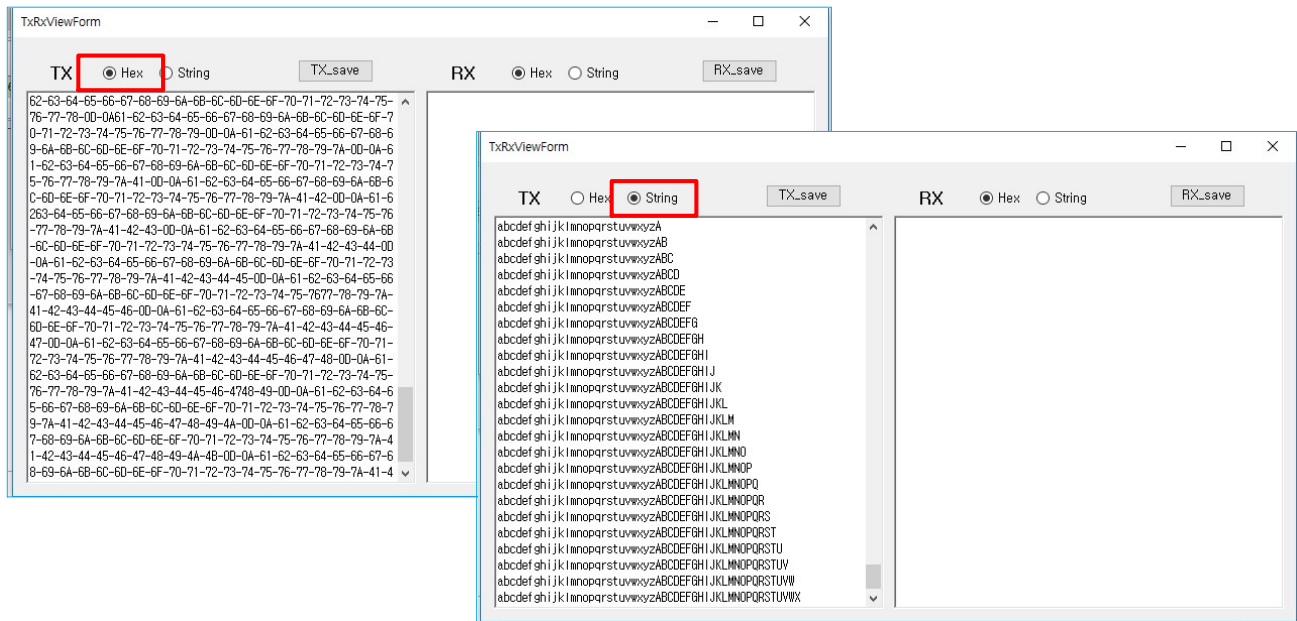
Statistics - Scope

Outputs TxRxViewForm which can check TX and RX information of the selected port in real time. You can check the Data delivered through TX and RX at the Form.



TxRxViewForm - Hex, String Radiobutton

Outputs values of TX and RX output values as Hex and string according to Radiobutton setting.



TxRxViewForm - Save

Save the TX Data or RX Data output on the screen to txt file.



If you have any inconvenience while using the product, please contact us.

Email:

- Purchase/Quotation: overseas@sysbas.com
- Technical Support/RMA: tech@sysbas.com

www.sysbas.com

Tel: +82-2-855-0501

Fax: +82-2-855-0580

Working Hour

MON ~ FRI 9:00 ~ 18:00

Copyright © 2020 SystemBase Co., Ltd. All Right Reserved.