

SGConfig

User Manual

Version 1.1
March 10, 2015

Revision History

Revision Date	Doc Version	Pages	Description
2014. 03.28	1.0	All	Written by JH Moon
2015. 03.10	1.1	1 Page	Modified by JH Moon

Copyright 2015 SystemBase Co., Ltd. All rights reserved.

Websites <http://www.sysbas.com/>

Phone +82-2-855-0501

FAX +82-2-855-0580

16F Daerung Post Tower-1, 288, Digital-ro, Guro-gu, Seoul, Republic of Korea

For any inquiries or comments, contact us at <http://www.solve.com/>

Index

Chapter 1.	Introduction.....	1
1.1	Software	1
1.2	System Requirement	1
1.3	SGConfig Feature Summary	1
Chapter 2.	How to use	2
2.1	Search.....	2
2.2	Search IP	2
2.3	Configure	3
2.4	Import	3
2.5	Telnet.....	4
2.6	Web	4
2.7	Upgrade Firmware	4
2.8	Apply	4
2.9	Configure IP address of the PortView	5

Chapter 1. Introduction

1.1 Software

SGConfig is a utility works with the SerialGate to configure the working environment of the SerialGate series. The SerialGate must have version 2.1.235 or greater to operate with the SGConfig.

Run SGConfig_v1.0.exe to start, installation is unnecessary.

1.2 System Requirement

- CPU : Pentium 1GHz or greater
- Memory : 512MB or greater
- Operating System : Windows 2000/XP/2003/Vista/7/8/8.1
- Network : Ethernet Connection

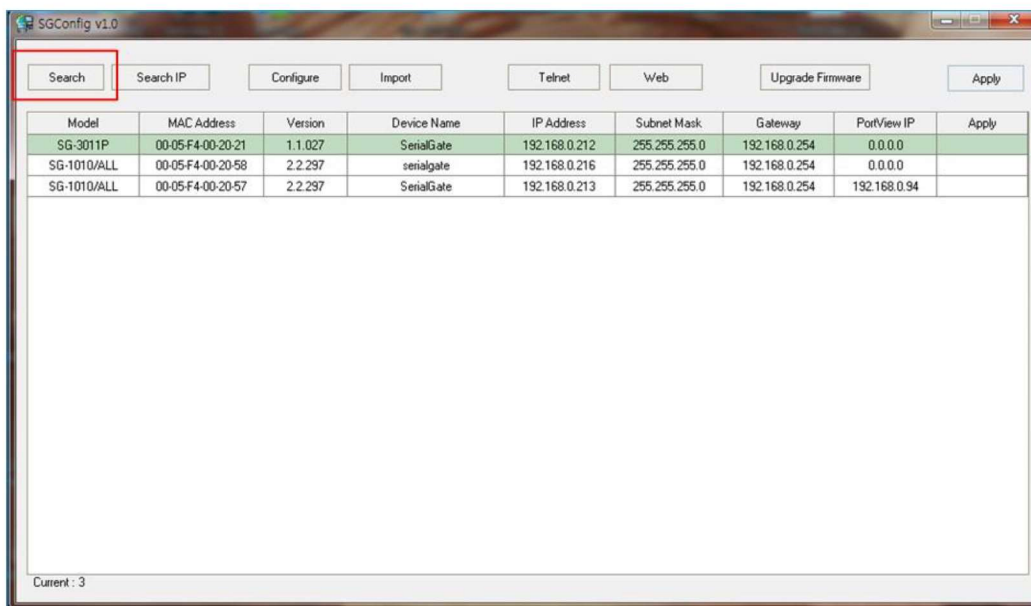
1.3 SGConfig Feature Summary

- Search: search devices in the local network.
- Search IP: Use this if the device is not shown with 'Search' feature or not in the same local network.
- Configuration: Change settings of the device.
- Import: Save the configuration of the device to the current PC.
- Telnet: Connect the device using telnet.
- Web: Connect the device using the web browser.
- Upgrade Firmware: Update the firmware of the device.
- Apply: Change values from the device name, IP address, subnet mask, gateway, PortView IP shown in the list.

Chapter 2. How to use

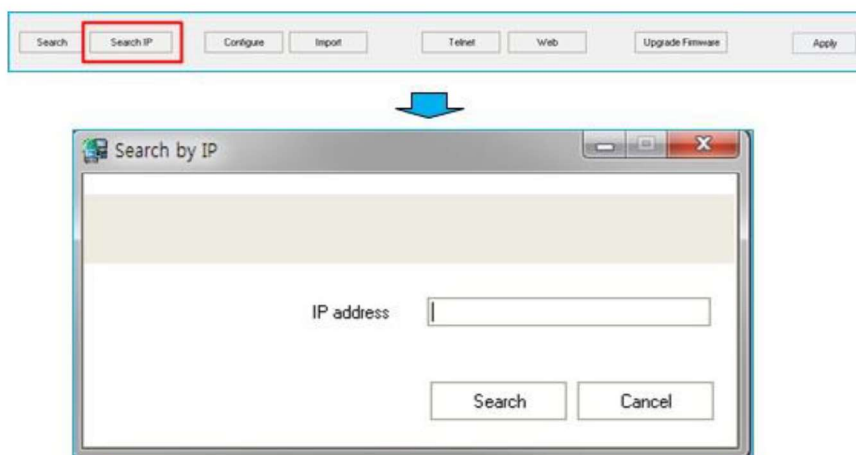
2.1 Search

Display device server in the local area network.



2.2 Search IP

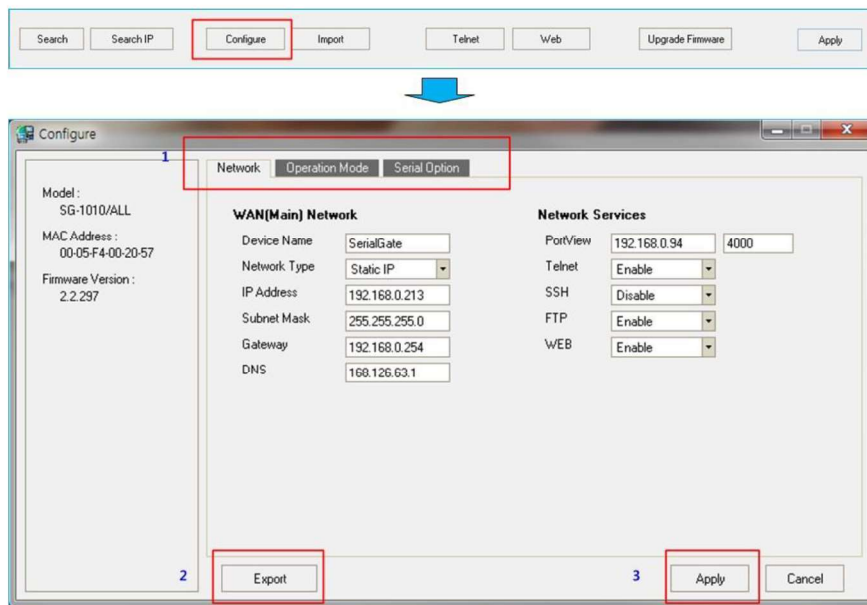
If the 'Search' feature does not work, use this to find it directly.



2.3 Configure

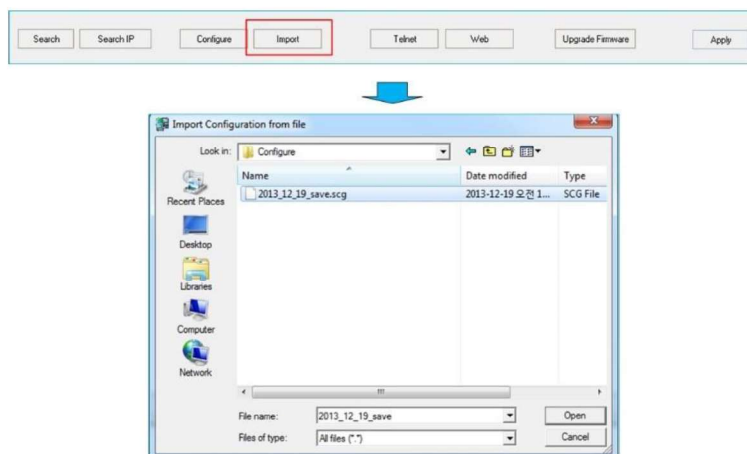
Change settings and apply.

- 1: Can set: network, operation mode, and serial option
- 2: When 'Export' button is clicked, current SerialGate settings can be saved.
- 3: When 'Apply' is clicked, current values shown in the settings will be applied to the device.



2.4 Import

Load saved settings in a file from the PC.



2.5 Telnet

Use telnet to connect to the selected IP address.

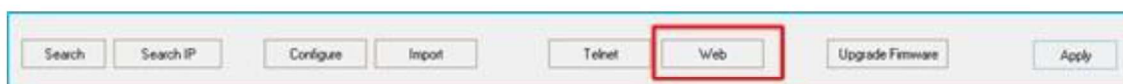
(If there are two devices with the same IP address, they can be accessed one at a time but not at the same time.)



2.6 Web

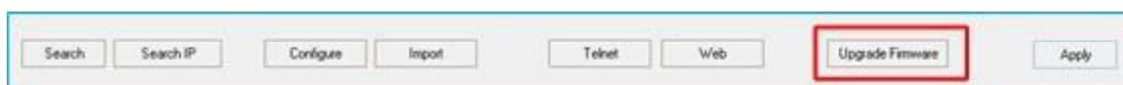
Use the web browser to connect to the selected IP address.

(If there are two devices with the same IP address, they can be accessed one at a time but not at the same time.)



2.7 Upgrade Firmware

Update the firmware of the selected device.

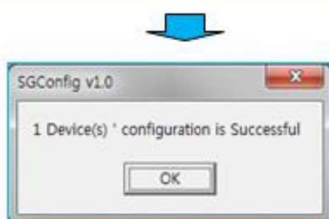


2.8 Apply

Change values from the device name, IP address, subnet mask, gateway, PortView IP shown in the list. When network status is changed, use the 'Search' button to refresh the list.



Model	MAC Address	Version	Device Name	IP Address	Subnet Mask	Gateway	PortView IP	Apply
SG-3011P	00-05-F4-00-20-21	1.1.027	SerialGate	192.168.0.213	255.255.255.0	192.168.0.254	0.0.0.0	
SG-1010/ALL	00-05-F4-00-20-57	2.2.297	Test Device	192.168.0.212	255.255.255.0	192.168.0.254	192.168.0.94	✓
SG-1010/ALL	00-05-F4-00-20-58	2.2.297	serialgate	192.168.0.216	255.255.255.0	192.168.0.254	0.0.0.0	

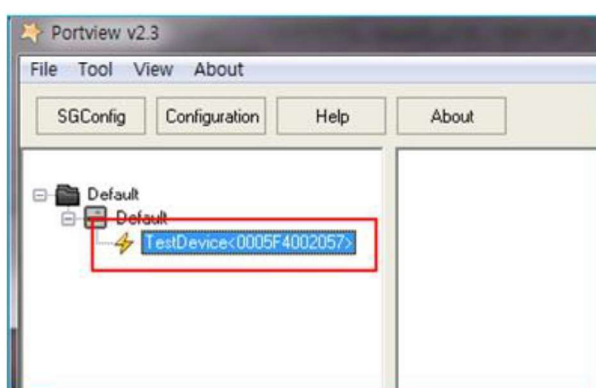


2.9 Configure IP address of the PortView

In the searched device list, change the IP address of the PC which the users wish to use the PortView.
After typing it, click apply button to change the settings in the device.

Search	Search IP	Configure	Import	Telnet	Web	Upgrade Firmware	Apply	
Model	MAC Address	Version	Device Name	IP Address	Subnet Mask	Gateway	PortView IP	Apply
SG-3011P	00-05-F4-00-20-21	1.1.027	SerialGate	192.168.0.213	255.255.255.0	192.168.0.254	0.0.0.0	
SG-1010/ALL	00-05-F4-00-20-57	2.2.297	Test Device	192.168.0.212	255.255.255.0	192.168.0.254	192.168.0.94	✓
SG-1010/ALL	00-05-F4-00-20-58	2.2.297	serialgate	192.168.0.216	255.255.255.0	192.168.0.254	0.0.0.0	

After above process is complete, the device name and the MAC address will be shown in the PC where the PortView is installed.



The IP address of the PortView can be modified with the web browser. Login to the SerialGate and go to Network Settings → PortView Server IP / Port. (The default login ID and password is: serialgate / 999999999)

Overview

Network Settings

SNMP Settings

Change Password

Factory Default

Reboot

Update Firmware

Logout

System Log

Network Settings

Wan Port Setting

Device Name: TestDevice

Line Type: Static IP

IP Address: 192.168.0.252

Subnet Mask: 255.255.255.0

Gateway: 192.168.0.254

DNS: 192.168.0.1

Network Service Setting

PortView Server IP / Port: 192.168.0.94 / 4000

Telnet Service: Enable

FTP Service: Enable

Web Manager: Enable

SSH Service: Disable

Apply Cancel

Click 'Apply' button after any changes are made.